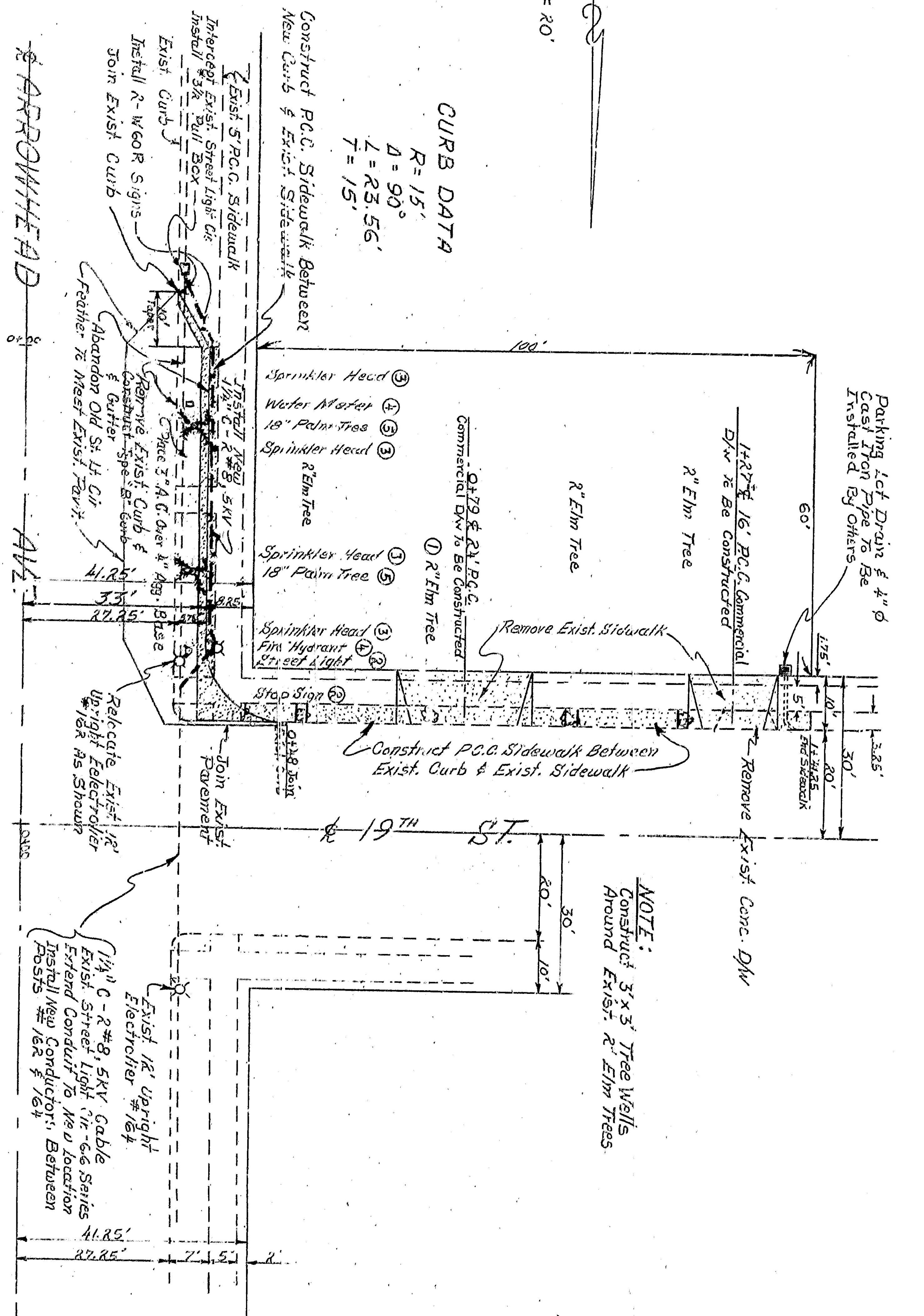


PROFILE
Scale: Vert. 1" = 2'

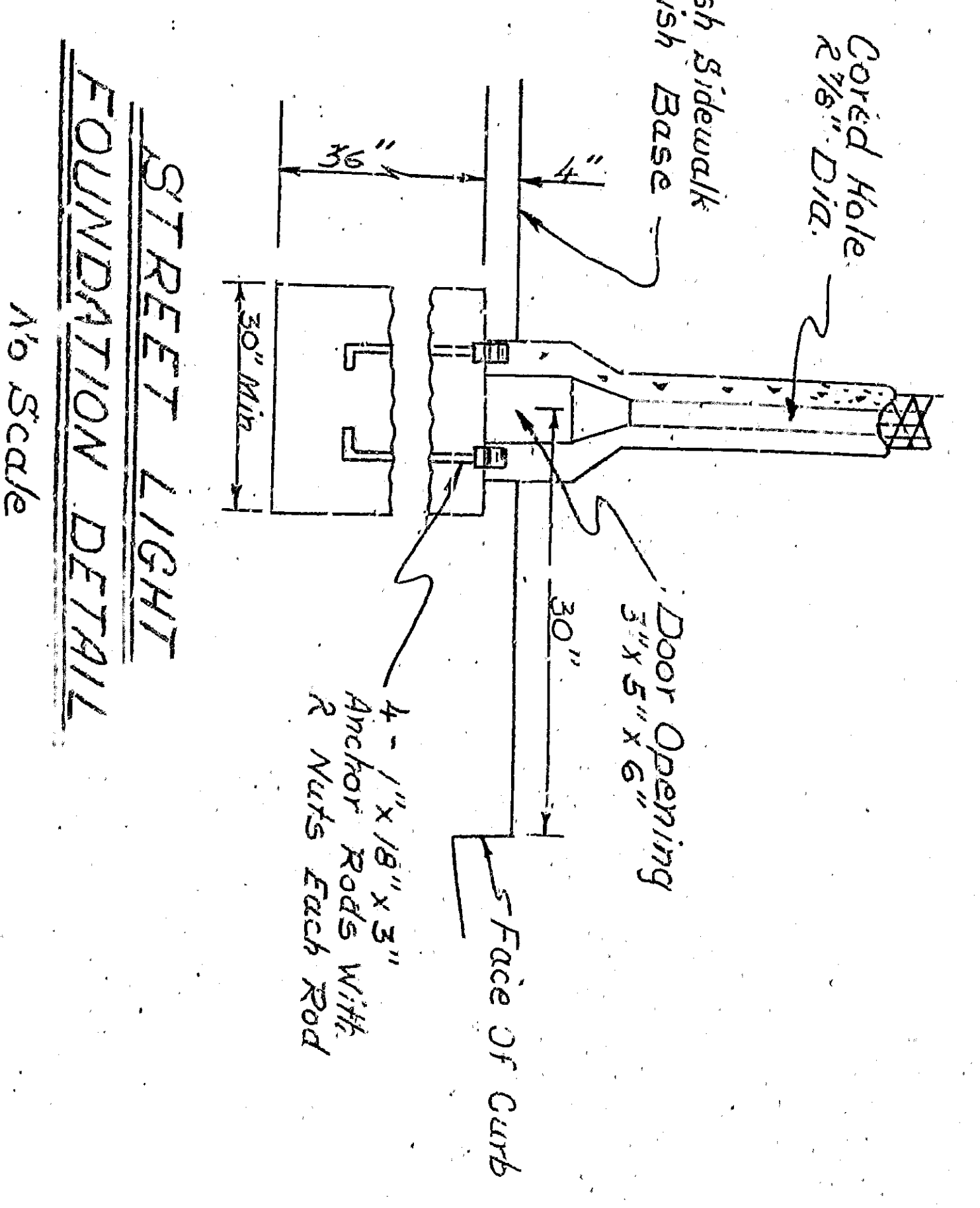
BENCH MARK
Corner S.W. Corner of 18th St
and Arrowhead Avenue
Elev. 1150.51 ft.

Scale: 1" = 20'

CURB DATA
R = 15'
Δ = 90°
L = 43.56'
T = 15'



TYPICAL SECTION
Scale: Vert. 1" = 1'



STREET LIGHT FOUNDATION DETAIL
No Scale

GENERAL NOTES

- All work embodied on this plan shall be done in conformity with applicable provisions of Standard Specifications No. 237, Revised October 1966, & Standard Drawings No. 232L on file in the Office of the City Engineer.
- Obstruction (markings on plan) to be removed & relocated under this contract.
- To be removed & relocated under this contract (footings on street signs shall be Class 'B' concrete, some as original installation).
- To be removed & deposited on adjacent property (all sprinkler pipe & heads are to be removed & capped.)
- To be removed or relocated by others.
- Palm Trees are to be removed & relocated back of existing sidewalk.

APPROVED	DATE	BY	FOR
	5-1-70	19 07	
CITY ENGINEER			
REGISTERED CIVIL ENGINEER NO. 25653			
DRAWING NO. DRAWN BY	CHKD BY	DATE	
5634	CKE/SD	5-1-70	
SHEET 1 OF 1	RECOMMENDED BY		
	NO SCALE		
DEPARTMENT OF ENGINEERING			
CITY OF SAN BERNARDINO			
IMPROVEMENT PLAN			
SOUTHWEST CORNER			
ARROWHEAD AVE. & 19TH ST.			